

signature structures

inspired by nature: beautifully practical tensile structures



What are Signature Structures?

A range of specially selected tensile fabric designs popular for their shade, shape, application, ease of installation and long life. In other words, our customers chose them!

Tensiles explained

A tensile form, as its name suggests is under tension throughout its entire shape. By adopting this basic principal in Tensile Fabric Structures, our canopies are permanent installations and will withstand US weather conditions. Installation is quick and hassle-free, undertaken in just a few days by our fully trained tensile engineers.

Canopies should be cleaned every 12 months with mild soap and water. Full operation and maintenance manuals are provided on completion of the installation.

Steel Frameworks

Frameworks are mild steel, in either a galvanized finish or polyester powder coated to most RAL colors. Stainless steel options available, please contact us for current prices.

Fittings

316 Stainless steel fixings plus anodized aluminum extrusion for some designs, depending on model and size chosen.

Canopy fabric

PVC coated polyester, available in white, cream, yellow, green, light blue, dark blue, silver gray and red. All color-fast with a life expectancy of 20 years.

Environmentally-friendly Solar Glass Weave option in off-white only, with a life expectancy of 30 years.

Fabrics have excellent resistance to mold, pollution and day-to-day grime. All fabrics are architectural grade and fire retardant to NFPA 701 - California State Fire Marshal which means that they do not support combustion or produce flaming droplets.

Modifications to leg heights are available plus adaptors for heating, lighting and electrical systems. Leg wrap accessories are available for most units. Structures can be joined to buildings or oversail rooflines. Bespoke designs are undertaken for structures over 75 m².

There are 3 basic forms of a tensile structure which incorporate double curvature to create the strength and organic design, these forms are:



Hypar



Conic



Barrel

What our customers say:

"space age, great!"

"site well organised . . . very helpful during installation"

"handled in a professional manner from concept to completion"

"thank you for all the sterling work carried throughout this extremely exacting contract"

"structure looks fabulous"

Some of our USA clients:

Disneyworld Florida

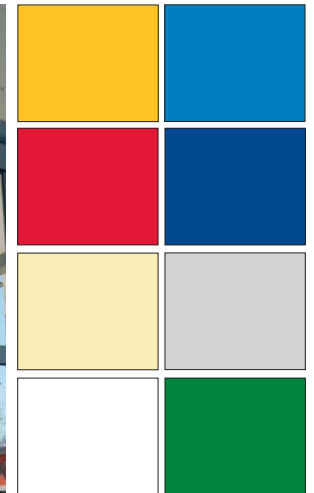
Valleycrest Companies

NFL Superbowl

Louisiana Children's Hospital

Randstad Staffing HQ

Coca Cola Company



Standard range of colors available in architectural PVC fabric

pagoda 4 section 16'5" x 16'5"



award-winning colorful design, infinitely modular

Dimensions (ft)					
	L	W	h1	h2	H
16'5" x 16'5"	16'5"	16'5"	7'2"	11'5"	15'5"

pagoda 7 section 34'5" x 22'11"



distinctive yet affordable, demountable options

Dimensions (ft)					
	L	W	h1	h2	H
34'5" x 22'11"	34'5"	22'11"	7'2"	11'5"	15'5"

pagoda 4 section 32'9" x 32'9"



excellent value & coverage

Dimensions (ft)					
	L	W	h1	h2	H
32'9" x 32'9"	32'9"	32'9"	8	16'2"	23"

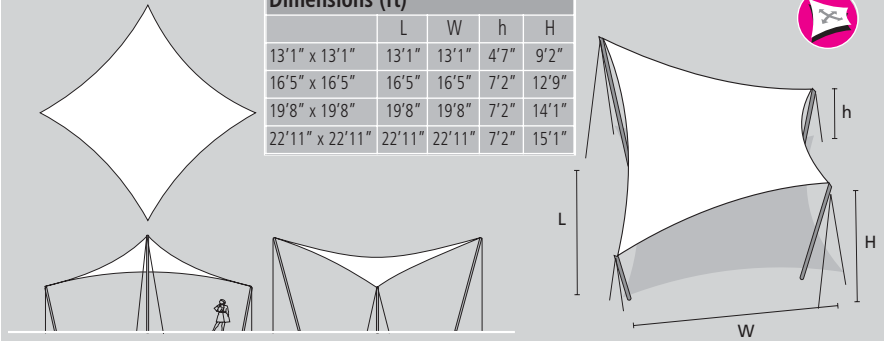
mistral 13'1" x 13'1" to 22'11" x 22'11"



eye-catching centrepiece canopy, organic form

Dimensions (ft)

	L	W	h	H
13'1" x 13'1"	13'1"	13'1"	4'7"	9'2"
16'5" x 16'5"	16'5"	16'5"	7'2"	12'9"
19'8" x 19'8"	19'8"	19'8"	7'2"	14'1"
22'11" x 22'11"	22'11"	22'11"	7'2"	15'1"



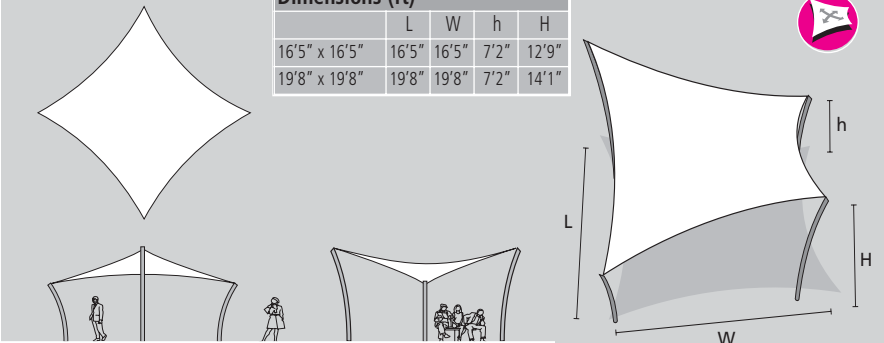
sirocco 16'5" x 16'5" & 19'8" x 19'8"



elegant, durable, free-standing tensile

Dimensions (ft)

	L	W	h	H
16'5" x 16'5"	16'5"	16'5"	7'2"	12'9"
19'8" x 19'8"	19'8"	19'8"	7'2"	14'1"



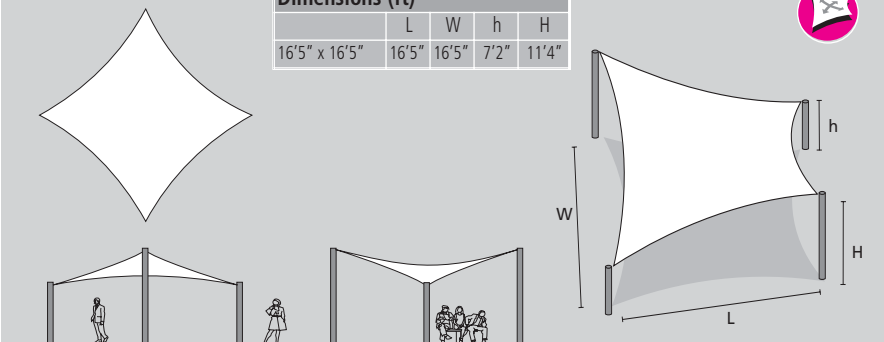
pow wow 16'5" x 16'5"



affordable, organic shade, demountable in winter

Dimensions (ft)

	L	W	h	H
16'5" x 16'5"	16'5"	16'5"	7'2"	11'4"



skylar 9'10" & 13'1"



adaptable feature design, easy installation

Dimensions (ft)				
	L	W	h	H
9'10" x 9'10"	13'1"	10'6"	7'10"	13'9"
13'1" x 13'1"	16'5"	13'9"	7'10"	15'5"

iron mountain 13'1" x 9'10"



distinctive feature structure, eye-catching and adaptable

Dimensions (ft)				
	L	W	h	H
13'1" x 9'10"	13'1"	9'10"	8'2"	15'5"

iron mountain 19'8" x 9'10", 19'8" x 13'1" & 26'2" x 13'1"



dramatic entrance structure, contemporary and stylish

Dimensions (ft)				
	L	W	h	H
19'8" x 9'10"	19'8"	9'10"	9'2"	16'1"
19'8" x 13'1"	19'8"	13'1"	8'6"	16'1"
26'2" x 13'1"	26'2"	13'1"	7'10"	16'5"

bandshell 19'8" Ø & 32'9" Ø



striking and innovative, free-standing performance zone

Dimensions (ft)				
	D	h1	h2	H
19'8" dia.	19'8"	7'10"	11'6"	13'5"
32'9" dia.	32'9"	8'10"	13'9"	17'

wave 16'5" x 9'10" modular



beautifully practical walkway, expands to fit

Dimensions (ft)				
	L	W	h	H
16'5" x 9'10"	16'5"	9'10"	7'6"	6'9"

stork 13'1" x 13'1" modular



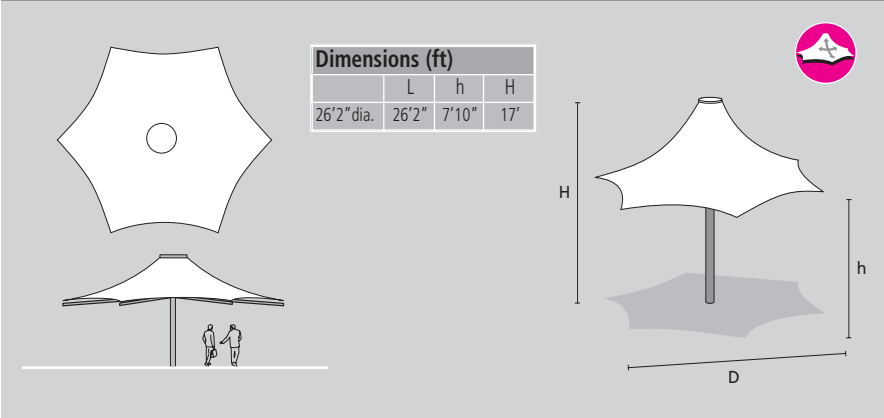
compact modular solution, highly adaptable

Dimensions (ft)				
	L	W	h	H
13'1" x 13'1"	13'1"	13'1"	7'6"	12'1"

single conic 26'2" Ø



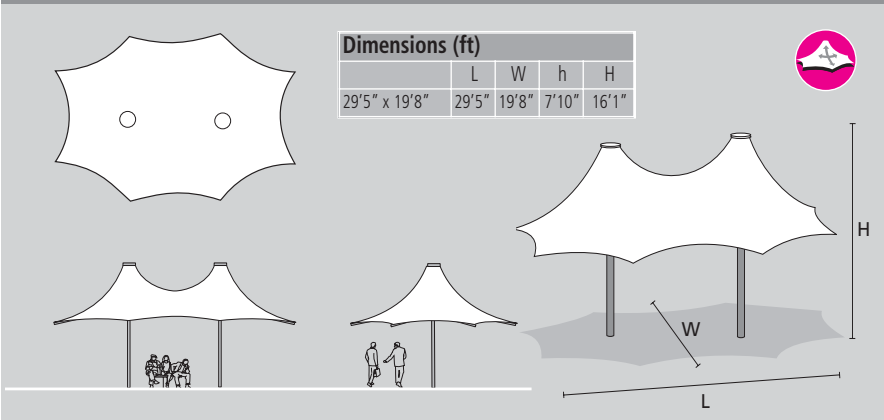
classical single conic form, practical and distinctive



double conic 29'5" x 19'8"



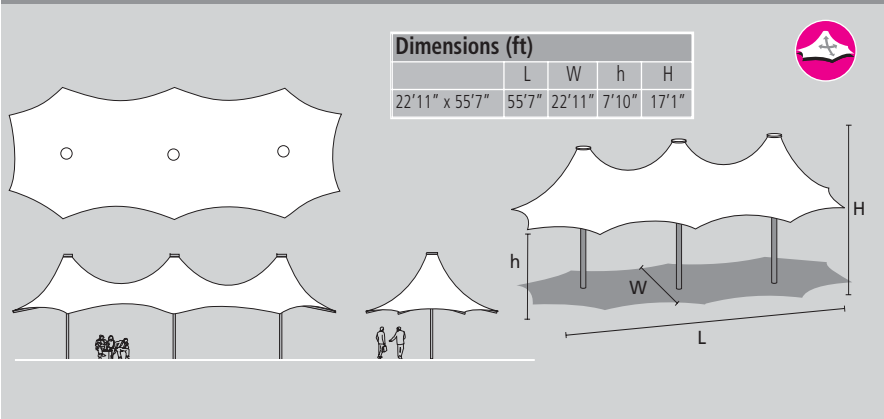
multi-use structure with good coverage and high impact



triple conic 55'7" x 22'11"



large covered area with elegant form for linking buildings



inverted conic 26'2" & 26'2"



organic form provides shelter with integral drainage

Dimensions (ft)

	L	W	h	H
26'2" x 26'2"	26'2"	26'2"	7'10"	16'5"

pod 9'10 x 9'10, 13'1" x 13'1" & 16'5" x 16'5"



practical and simple design, demountable & self-installed

Dimensions (ft)

	L	W	h	H
9'10" x 9'10"	9'10"	9'10"	7'6"	10'6"
13'1" x 13'1"	13'1"	13'1"	7'6"	11'9"
16'5" x 16'5"	16'5"	16'5"	7'6"	13'1"

halo 16'5" x 16'5" & 19'8" x 19'8" modular



easy to include walls with integral drainage

Dimensions (ft)

	L	W	h	H
16'5" x 16'5"	16'5"	16'5"	7'2"	11'6"
19'8" x 19'8"	19'8"	19'8"	7'2"	12'1"

gothic barrel vault 22'11" x 22'11" modular



classical clearspan canopy, spacious and airy

Dimensions (ft)				
	L	W	h	H
22'11" x 22'11"	22'11"	22'11"	7'10"	14'9"

classroom 22'11" x 16'5" modular



durable, colorful, modular canopy gives good coverage

Dimensions (ft)				
	L	W	h	H
22'11" x 16'5"	22'11"	16'5"	8'10"	13'1"

hull walkway 16'5" x 9'10" modular



modern flexible structure, multiple applications

Dimensions (ft)				
	L	W	h	H
16'5" x 9'10"	16'5"	9'10"	8'6"	12'1"

signature structure matrix - a useful guide to help you choose the right structure for your needs

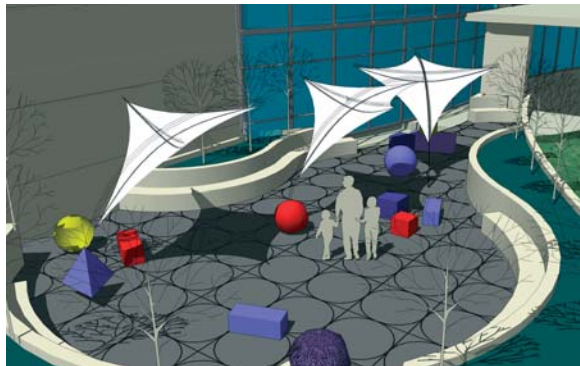
	 pagoda	 mistral	 sirocco	 pow wow	 skylar	 iron mountain	 bandshell	 wave	 stork
Easy to join together	✓	✗	✗	✗	✗	✗	✗	✓	✓
Fits around corners	✓	✗	✗	✗	✓	✗	✗	✗	✓
UV protection	✓	✓	✓	✓	✓	✓	✓	✓	✓
Integral drainage	✓	✗	✗	✗	✗	✗	✓	✓	✓
Colors available	✓	✓	✓	✓	✓	✓	✓	✓	✓
Demountable	✓	✗	✗	✓	✓	✗	✗	✗	✗
Waterproof	✓	✓	✓	✗	✓	✓	✓	✓	✓

	 single conic	 double conic	 triple conic	 inverted conic	 pod	 halo	 gothic vault	 classroom	 walkway
Easy to join together	✗	✗	✗	✗	✗	✓	✓	✓	✓
Fits around corners	✗	✗	✗	✗	✗	✓	✓	✗	✗
UV protection	✓	✓	✓	✓	✓	✓	✓	✓	✓
Integral drainage	✗	✗	✗	✓	✗	✓	✓	✗	✗
Colors available	✓	✓	✓	✓	✓	✓	✓	✓	✓
Demountable	✗	✗	✗	✗	✓	✗	✗	✗	✗
Waterproof	✓	✓	✓	✓	✓	✓	✓	✓	✓

A dedicated and enthusiastic team passionate about the design, manufacture and installation of tensile fabric structures for interior and exterior applications worldwide.

We have specific departments that specialize in bespoke Design and Build structures as well as pre-design engineered Signature Structures.

With over 25 years experience in the field of tensiles encompassing design, form-finding, visualization, patterning, engineering, manufacture and installation supported by offices throughout the UK. In response to the increasing awareness of climate change and the need for shade, we have recently opened offices in Texas and Florida.



Fabric Architecture USA
174 WaterColor Way
Suite 291
Santa Rosa Beach, FL 32459
Tel: 404-578-1651 **Email:** info@fabarcusa.com

Typical planning and installation process

The normal lead-in period for installation is 8 to 10 weeks. We will provide you with a dedicated Production Manager on call to assist you with your planning process, in advance of the installation.

A Step-by-Step guide to planning and installing your Signature Structure

From receipt of order:

- Week 1** Book installation date with Fabric Architecture
Receive General Arrangement and Set-Out sheets for foundation pads
Obtain quotes for Fabric Architecture foundation package or contact a local contractor to excavate holes, pour foundations and make good the surface.
- Week 2-3** Confirm fabric and steel colors with Fabric Architecture
Fabrication of structure commences
Choose your preferred contractor and book date for ground-works (there must be at least 3 weeks cure time prior to installation)
- Week 4** Set-out, excavation and pouring of foundations to Fabric Architecture's specifications
Fabric Architecture courtesy call to ensure foundations are completed
- Week 5-8** Confirm site details with Fabric Architecture - dates, access, deliveries etc.
- Week 8-10** Fabric Architecture on site to complete installation (regularly between 1 and 4 days depending on size of structure)
- Week 11** Chosen contractor returns to site to make good the surface
- Week 12** Fabric Architecture sends completion certificate with Operations & Maintenance manual

www.fabricarchitecture.com